

# From complexity to clarity: Scaling environmental data in HVACR

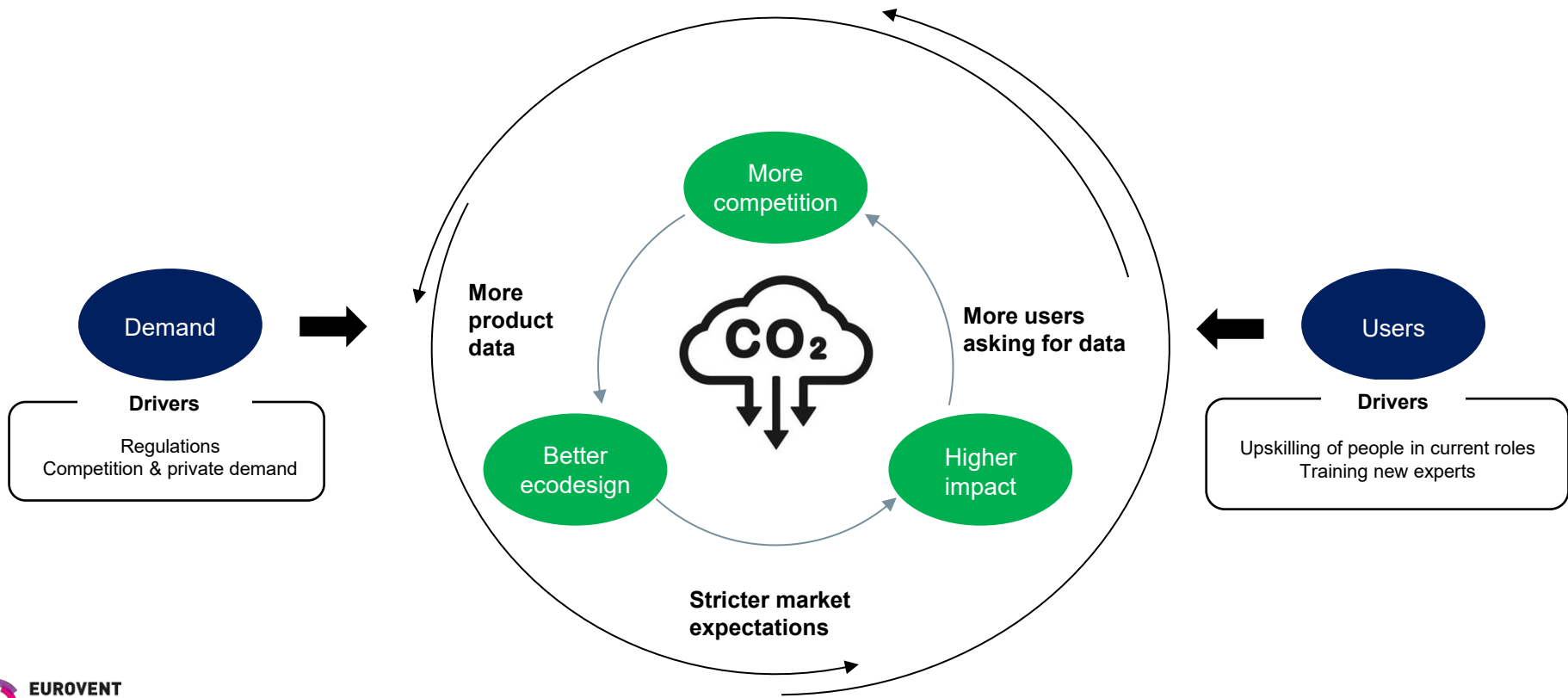
**Erik Björn**

Team Leader Business  
Development – Nordics  
One Click LCA



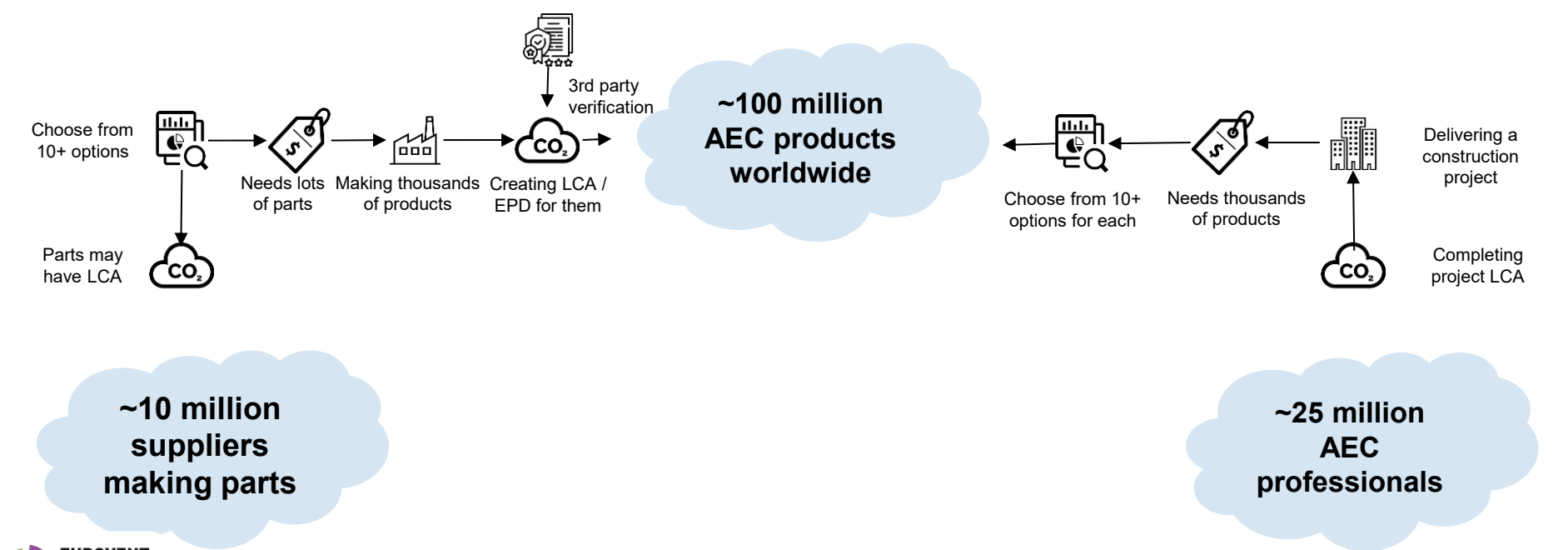
# If decarbonization is the purpose, the industry isn't doing enough

We do not have an Oil Crisis to push through the change, we have to make it happen with market forces



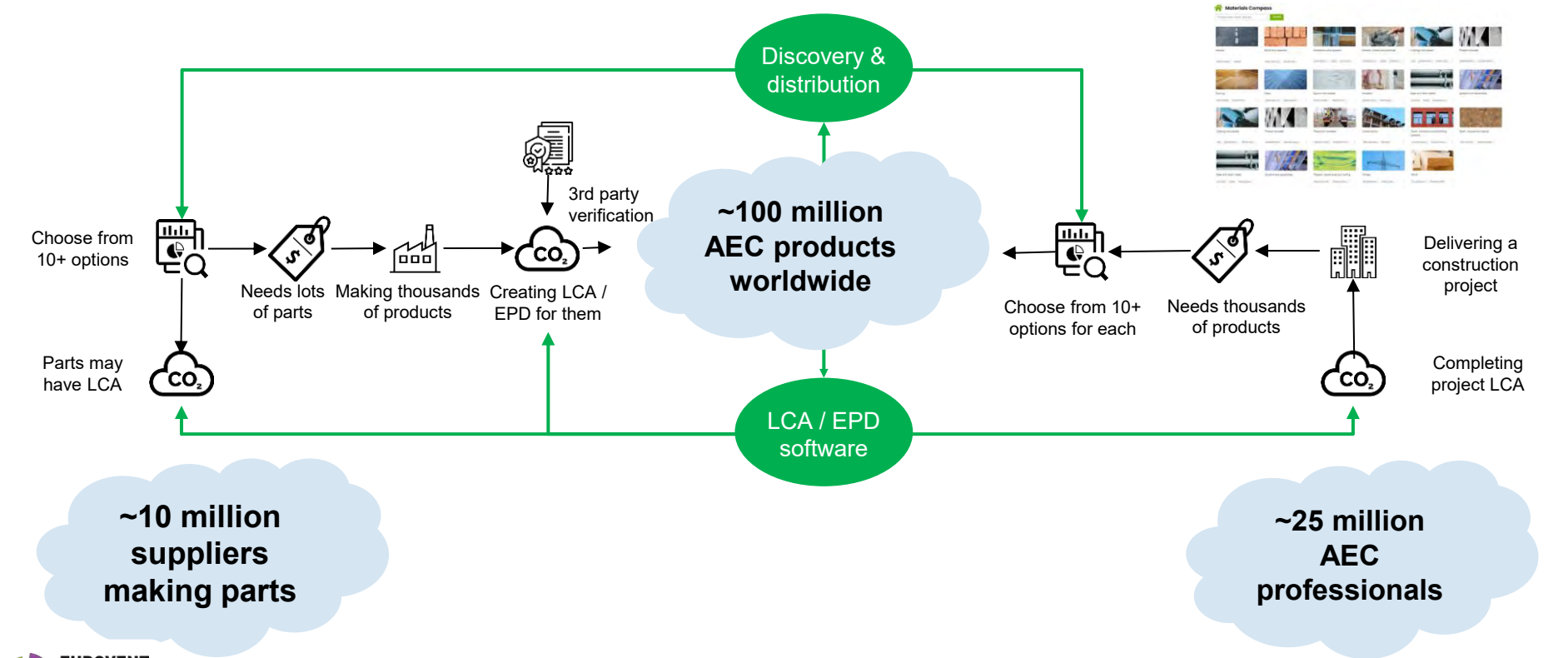
# The supply chain from parts to products to projects is a vast one

To service this, the world has some 20 000 LCA practitioners and well below 1 000 EPD verifiers



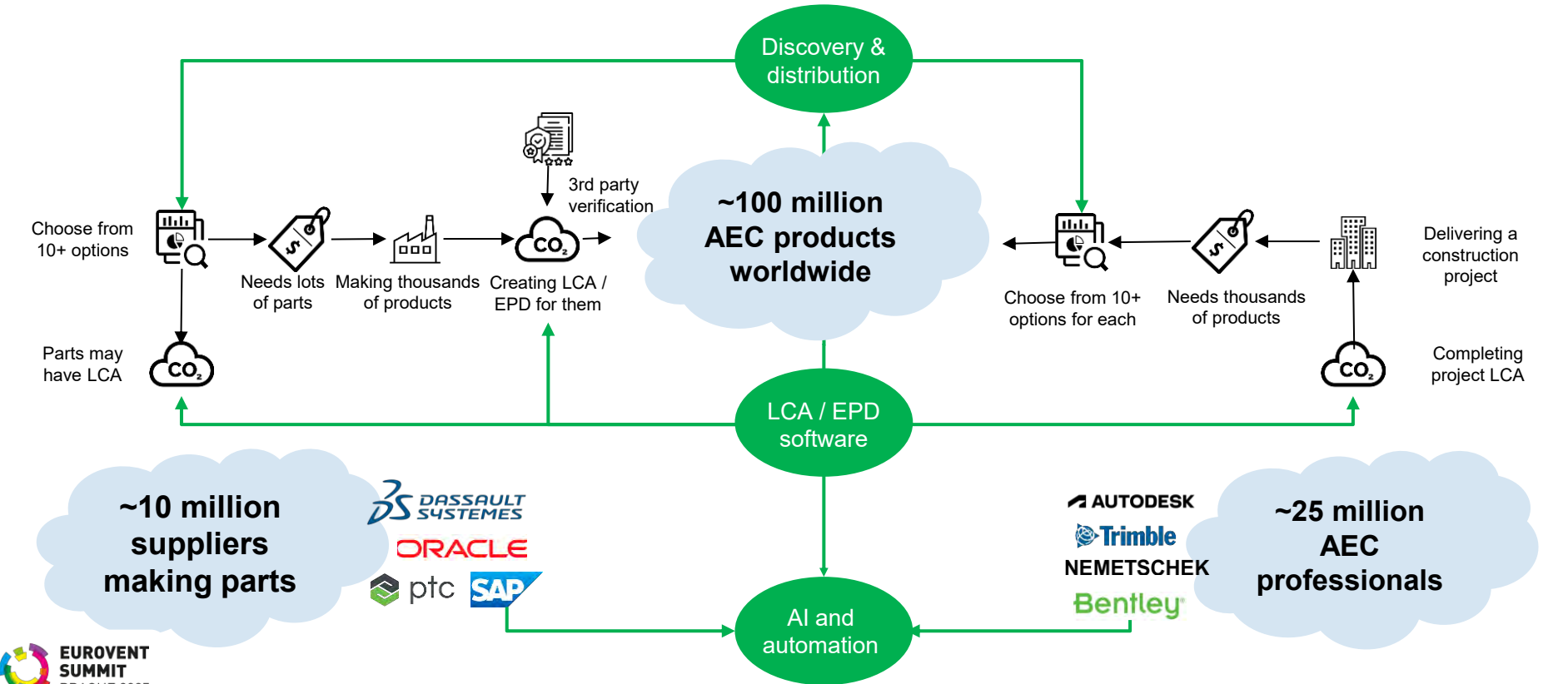
# For data to reach all users, we need an end to end data flow

Sustainability data is needed by millions in easy to use format and way



# The scale of this challenge requires seamless automation

In addition to integrations, we also need to leverage generative and agentic AI and other technologies

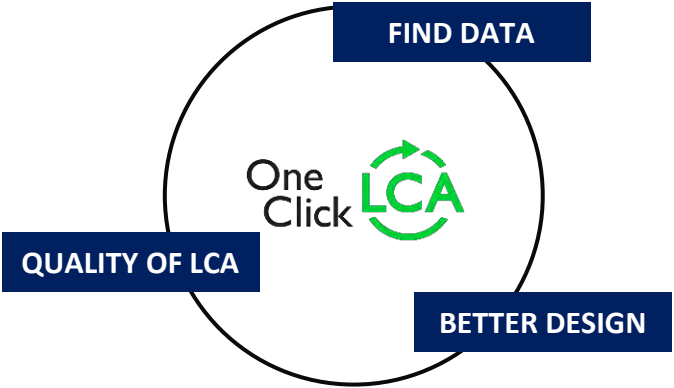


# The Role of AI in Scaling Environmental Data

## EPD COMPLETENESS CHECKER

Field	Project value (%)	Difference	Validated
Fixes recommended			
Mass balance	1.3	-0.3%	
Biogenic balancing	2.1	+1.2%	
Energy balancing	3.1	+2.1%	
In order			
Amount of materials	0.4	-0.8%	
Embodied carbon	0.4	-0.8%	
Finishes mass	0.6	+0.6%	

## AI POWERED SEARCH



## LCA PLAUSIBILITY CHECKER

Area	Issue	Difference	Threshold value	Unit	Validated
Fixes recommended					
Glaze mass	Unusual value	+3	<5	kg/m2	
Insulation mass	Unusual value	+2	<5	kg/m2	
External area mass	Unusual value	+2	<5	kg/m2	
In order					
Amount of materials		-1	<5	kg/m2	
Embodied carbon		-1	<5	kg/m2	
Finishes mass		-1	<5	kg/m2	

## AI MAPPING IN 8 LANGUAGES

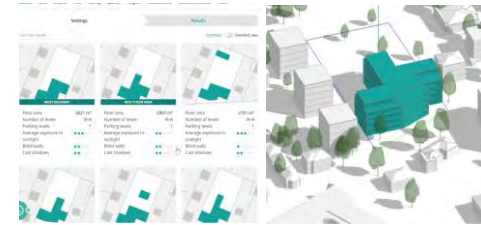
Gravel, dry bulk density, 1680 kg/m<sup>3</sup> Aircrete (BPCF) - IBU Report bad mapping

AI MODEL SUGGESTED DATA (13) - Our AI model provides suggestions based on the material name, and your actions will help improve recognition.

Gravel, dry bulk density, 1680 kg/m<sup>3</sup> - One Click LCA

- Material name [AI]
- Material name [AI]
- Material name [AI]
- System label
- Material name [AI]

## GENERATIVE DESIGN

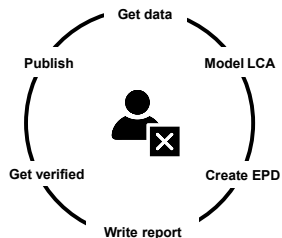


# How EPDs can become faster, easier, and scalable

Simplifying complexity: opening the door to more EPD creators

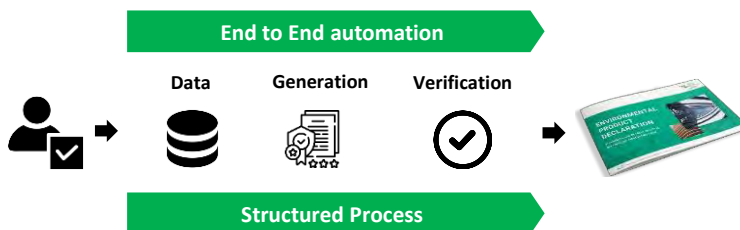
## BEFORE: EPDS ARE COMPLEX

Creating an EPD is expensive & takes months



## NOW: WE MAKE THEM EASIER, FASTER AND SCALABLE

Create compliant, third-party verified EPDs in a fraction of the time and cost, avoiding issues



## FUTURE: EPD GENERATION VIA API

Generate EPDs automatically

```

0:
class: "PRODUCT_MATERIALS"
OCLID: "633a7209a2466359afaf6c2e"
quantity: 10
unit: "kg"
additionalInformation:
  MASS_PER_UNIT: 1
  PRODUCTION_LOSSES: 10
  COPRODUCT_ALLOCATION: 90
  epdStandardVersionAddQ: "all"
  TRANSPORT_LEG1_KM: 100
  TRANSPORT_LEG1_METHOD: "ecoinvent38_241d756d8d6e2c2"
  TRANSPORT_LEG2_KM: 50
  
```

# Great, you got some EPDs, now what?

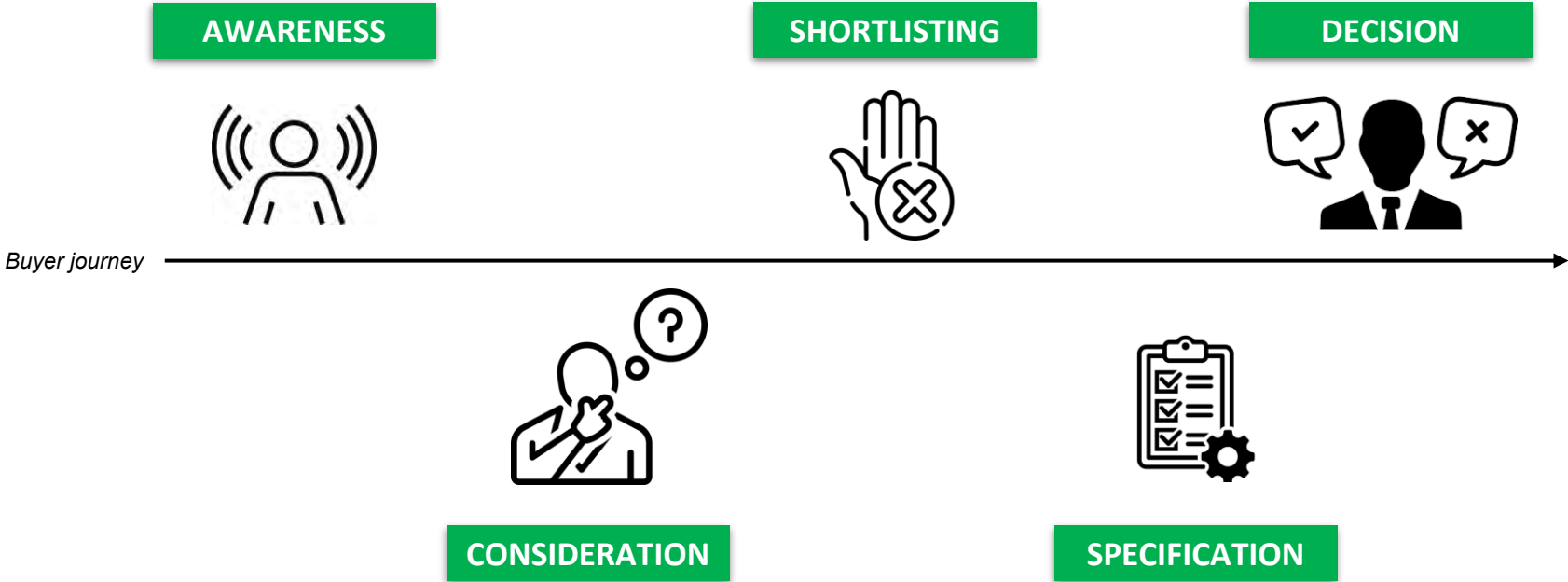
Preparing the EPDs is only costing time and money - and all value is created from using them





# Reach the buyers early to influence product prescription

If the only time your product is considered is at the price bid stage, your chances to win sink



# The EPD data is used in different ways by different end users

Some users want to just know EPDs exist, others look at the GWP data and others use it in LCAs



ANALYSTS



MANAGERS



PROCUREMENT



DESIGNERS



CONTRACTORS



REGULATORS



SPECIALISTS



SALES & MKTING

# Making EPDs available where the designers work

## Autodesk Revit

LCA inside Revit (two-way) - plugin



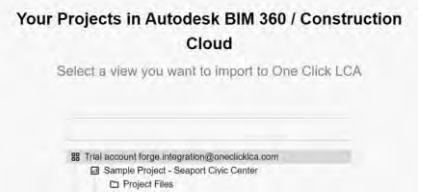
## Autodesk Civil3D

Infrastructure LCA - plugin



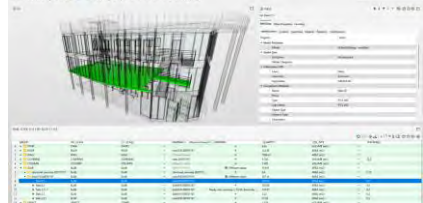
## Autodesk BIM360/ACC

Import data from cloud services



## Solibri

Federate IFC files for the LCA



## Archicad

Export BOM - plugin



## Allplan

Native integration



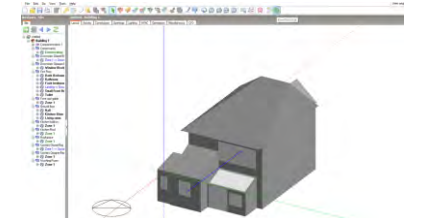
## IES-VE

Native integration



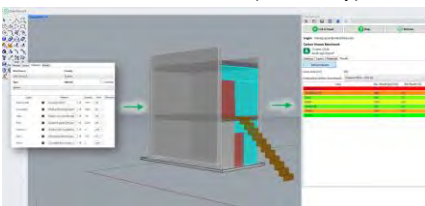
## DesignBuilder

Native integration



## Rhino

LCA inside Rhino (two-way)



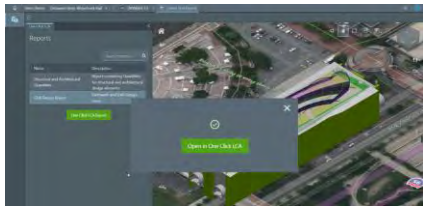
## Grasshopper

Parametric LCA capability



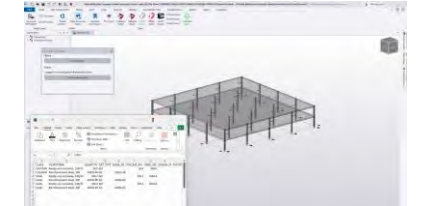
## Bentley iTwin

Native integration



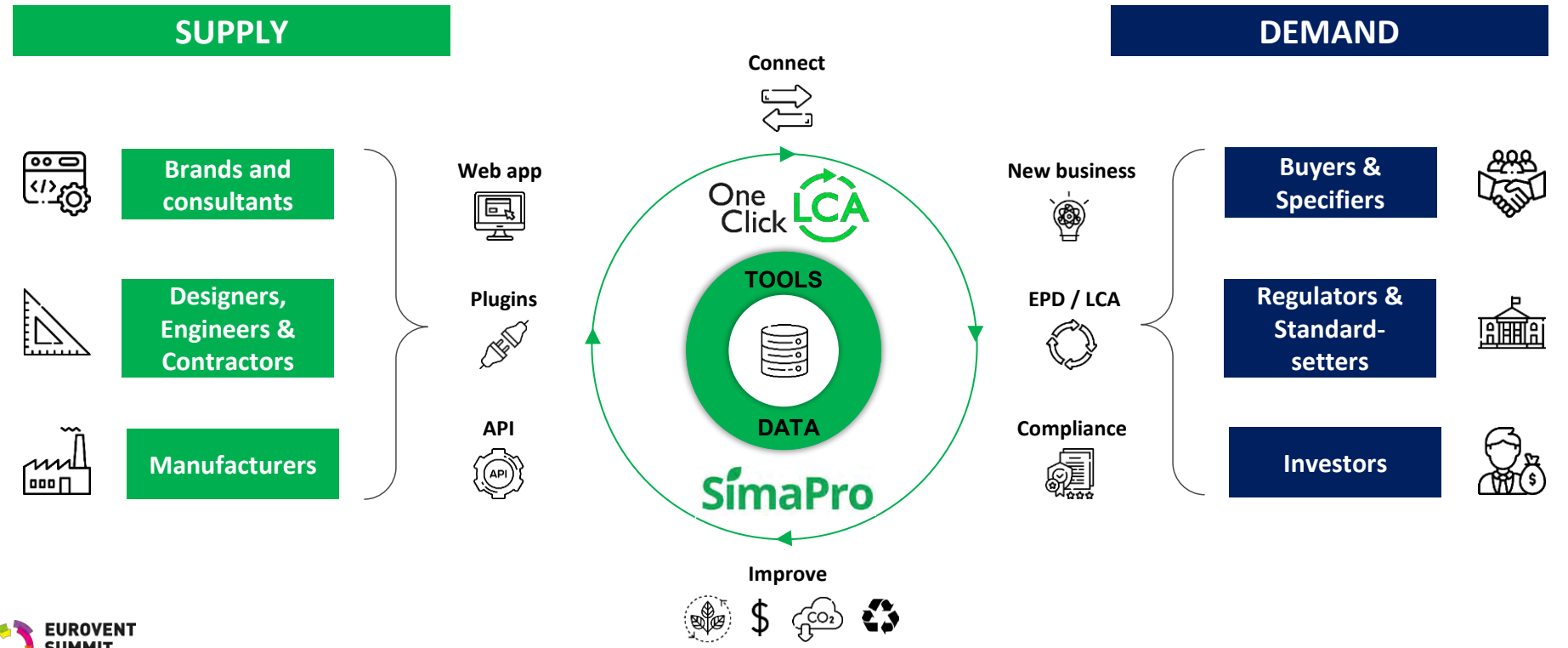
## Tekla Structures

Native integration (also for TSD)



# Transform your data to sustainability results for your customers

Bridging the gap between those who create data and those who act on it





# EUROVENT SUMMIT PRAGUE 2025

#ManufacturingForTomorrow